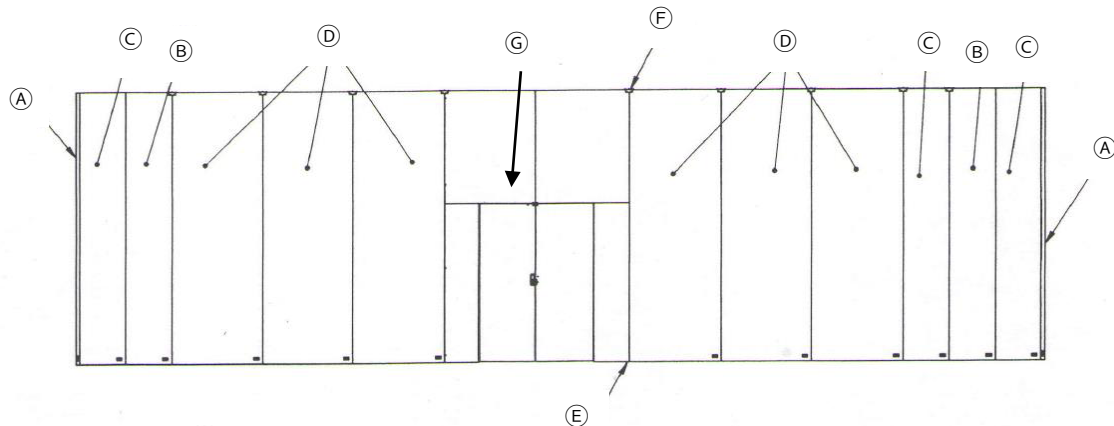


NuBarricade

Rev. 01 12/23



- A) Wall Attachment
- B) Flexible Rounded Corner
- C) 2' Panel

- D) 4' Panel
- E) Floor Bracket
- F) Upper Bracket Assembly

- G) Door Assembly

Please Read Disclaimers:

PLEASE READ ALL INSTRUCTIONS BEFORE BEGINNING INSTALLATION!!

These guidelines are provided in good faith to help prevent any problems caused by common errors in installation. The manufacturer and/or distributor of this product shall not be held responsible for installation actions taken or not taken. There are many details of installation that are assumed to be general construction knowledge to experienced installers which are not included in these instructions. These installation guidelines are intended to be strictly recommendations and are NOT to serve as a step-by-step, fail-safe installation checklist. Selection of an experienced installer is the sole responsibility of the project owner and architect.

Nudo Products, Inc. does not accept any responsibility for job failure resulting from or associated with improper site environmental conditions.

Safety Instructions:

CAUTION: Do not leave an unsecured NuBarricade Panel System unattended.

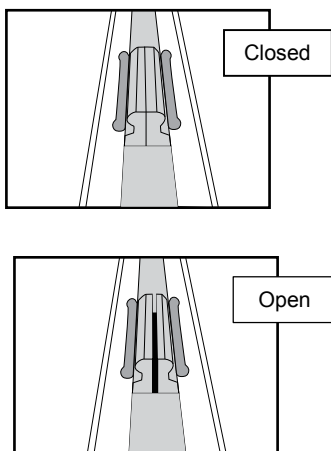
When cutting or drilling, always wear protective glasses or goggles and a face mask which covers the face and mouth.

Materials Needed

- NuBarricade Modular Panel Parts
- Screws
- Anchors (if necessary)
- Other misc. fasteners
- Shims
- Duct Tape
- Mild soap and water or alcohol wipes, for use in clean-up
- Rags
- Personal protection equipment (goggles & mask)

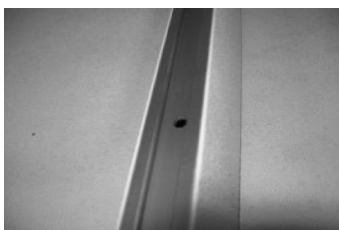
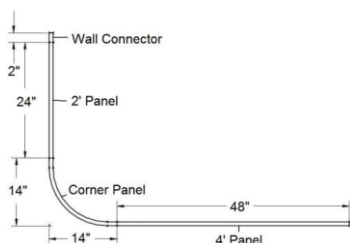
BEFORE INSTALLATION

Please Note:



- Both ends of the NuBarricade Panel System and the ceiling brackets must be securely fastened to the wall, per instructions.
- The floor brackets must be securely fastened to the floor per the instructions.
- Ensure that the panel connectors are in the closed position as each panel is installed. See Pictures.
- Ensure that the connector holes face inside the barricade as each panel is installed.
- Check the panels as they are installed to ensure they are plumb in both directions.
- As you build, measure the distance from the wall to the barricade to ensure that the barricade maintains equal distance from the wall.

INSTALLING WALL ATTACHMENTS:



- Determine Barricade location and length. Determine layout of wall panels and door location required. Mark the intended left and right wall install locations. Note: this is a modular system and may be configured differently than shown in the diagram.
- Mark the intended left and right Wall Attachment(A) locations.
- Attach Wall Attachments (A) to the permanent wall placing the flat aluminum face against the wall and attach using pre-drilled holes and screws. (Drill other holes if necessary.) Use a level and shims to ensure that the Wall Attachments are attached plumb in both directions. The Wall Connector with the internal connectors should be placed on the right side of the opening. If installing Height Extender Panels, attach Height Extender Wall Attachment (refer to page 5).

NUDO

Nudo Products, Inc.
1500 Taylor Avenue
Springfield, IL 62703
Phone 1.800.826.4132 * 1.217.528.5636
Fax 1.217.528.8722

Form 6012 Rev. 01 12/14
Info@nudo.com
www.nudo.com

JOINING WALL PANELS



Illustration 1.1



Illustration 1.2

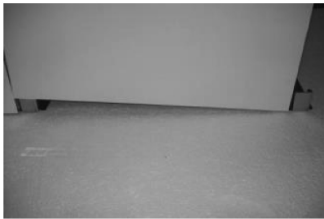


Illustration 1.3



Illustration 1.4



Illustration 1.5

Panels should be installed from the left working towards the right when facing the opening. Ensure panel connectors are in closed position.

1. Attach the first panel to the Wall Attachment (A). Fit the first panel (B, C, or D) to the Wall Attachment (A) and tighten internal connectors using T-Handle wrench (provided) turning clockwise. **Note: The floor bracket is not needed to attach the Wall Attachment (A) to the first panel.**
2. Place the leading edge of the first installed panel (B, C, or D) into Floor Bracket (E) with the Floor Bracket facing inward. *Illustration 1.1*
3. Place the next panel in the opposite side of the Floor Bracket. *Illustration 1.2 and 1.3*
4. Fit panels together – if necessary lock panels together at top with locking pliers.
5. On inside, tighten Connectors using wrench provided. *Illustration 1.4*
6. **If Installing Height Extender Panels skip to Page 5.**
7. Insert Upper Bracket (F) into slots at top of panel joint and secure back to header.
8. Repeat Step 3-8 until desired wall length is complete fitting Door Assembly (G) and Flex Corners (B) or 90 Degree Corners (not shown) in at desired locations.
9. Attach final panel to opposite Wall Attachment.
10. Secure Floor Brackets (E) by taping to the floor on inside of NuBarricade wall. *Illustration 1.5*

Foot Brackets and Upper Brackets, or Free Standing Floor Brackets (not shown) should be installed at every panel joint.

NOTE: Do Not use power tools or over-tighten

NUDO®

Nudo Products, Inc.
1500 Taylor Avenue
Springfield, IL 62703
Phone 1.800.826.4132 * 1.217.528.5636
Fax 1.217.528.8722

Form 6012 Rev. 01 12/14
Info@nudo.com
www.nudo.com

INSTALLING CORNERS



Attach the corner panel in the same way as other panels. Attach additional panel after it – then grabbing that panel, walk it around to make the corner panel bend into position.



Remove one panel at a time starting from the right side. Remove each floor and upper bracket as each panel is removed.

DISASSEMBLY

All NuBarricade panels should be stored indoors on a solid, flat, dry surface. Do not store in a wet area. Optimum storage conditions are 60°F (16°C) to 75°F (24°C) and 35% to 55% relative humidity.

STORAGE

NUDO[®]

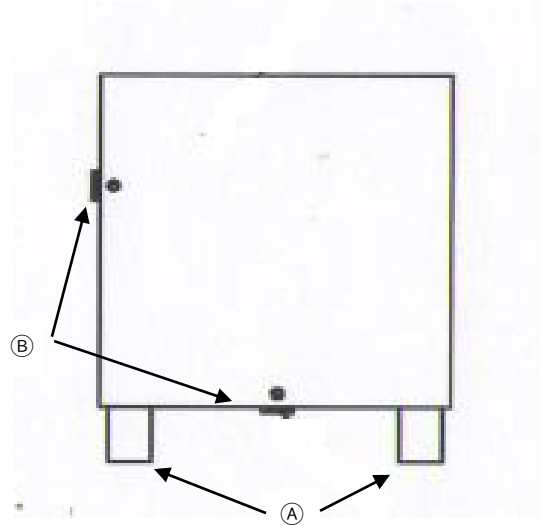
Nudo Products, Inc.
1500 Taylor Avenue
Springfield, IL 62703
Phone 1.800.826.4132 * 1.217.528.5636
Fax 1.217.528.8722

Form 60 12 Rev. 01 12/14
Info@nudo.com
www.nudo.com

INSTALLING HEIGHT EXTENDER PANELS

Ⓐ - Stacking Pegs

Ⓑ - Internal Panel Connections

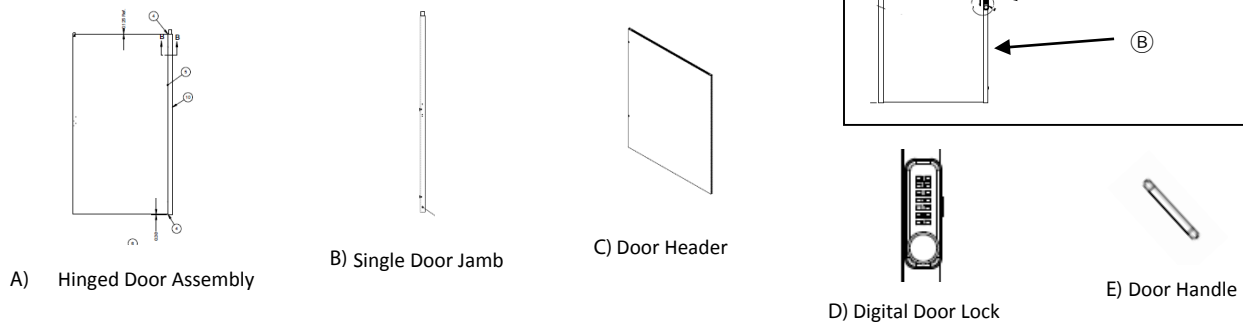


- Using the same type of Height Extender Wall Connection (*with or without internal connectors*), place the flat aluminum face against the wall and insert stacking peg (A) into slot at top of the Installed Wall Connection.
- Attach to the permanent wall by using pre-drilled holes and screws. (Drill other holes if necessary.) Use a level and shims to ensure that the Wall Connectors are attached plumb in both directions.
- Attach Base Panel by following instructions on page 3 step 2 – 5.
- Choose same width of Panel Height Extender as in base panel.
- Insert stacking pegs (A) into slots at top of panel joint and tighten internal panel connectors using T-Handle wrench (provided) turning clockwise.
- Insert Upper Bracket (F) into slots at top of panel joint and secure back to header.
- Return to Page 3 step 2 and repeat all steps until desired wall length is met inserting door panels at desired location.

NuBarricade

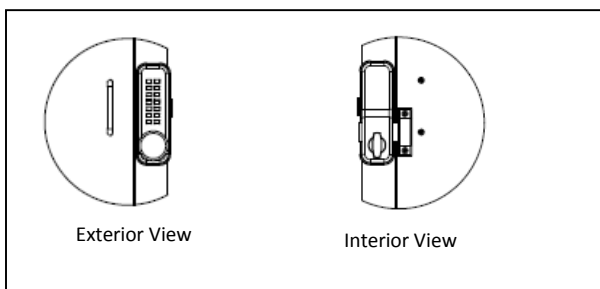
Single Door Assembly Guidelines

NUB-BFPXX-DS8, NUB-BFPXX-DS10, NUB-BFPXX-DS12



1. Assemble door components before installing into wall
 - Ensure panel connectors are in closed position
 - Lay Hinged Door Assembly (A) flat on floor – sticker side facing up
 - Lay Single Door Jamb (B) next to door assembly – flat side facing (A)
 - Insert Door Header (C) into stacking pegs on top of door assembly and jamb – sticker side up
 - Tighten header connectors
 - Ensure side panel connectors are in closed position
 - Lift door and position into wall
2. Place leading door panel edge in Floor Bracket directly next to installed panels
 - Insert Place floor bracket on following edge
 - Fit door to panel on leading edge of installed panel wall
 - On inside, hand tighten connectors using Allen wrench
 - Do Not use power tools or over-tighten
 - Place Single Door Jamb (B) in door assembly and floor bracket
 - Adjust fit if necessary using shims at floor brackets
 - Insert Upper Bracket into slots at top of panel joint and secure back to header
 - or
 - Insert Free Standing Bracket at slots at top of panel joint and secure to floor.
 - Continue installing Panels
3. Attach door hardware using pre-drilled holes (Illustration 1.1) and lock instructions located with lock
 - Digital Door Lock attaches on the jamb and door handles attach on swinging door

Illustration 1.1



NUDO

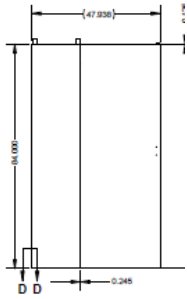
Nudo Products, Inc.
1500 Taylor Avenue
Springfield, IL 62703
Phone 1.800.826.4132 * 1.217.528.5636
Fax 1.217.528.8722

Form 6012 Rev. 01 12/14
Info@nudo.com
www.nudo.com

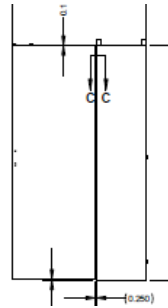
NuBarricade

Double Door Assembly Guidelines

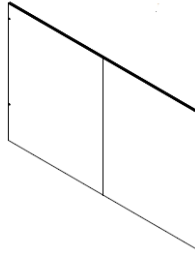
NUB-BFPXX-DD8, NUB-BFPXX-DD10, NUB-BFPXX-DD12



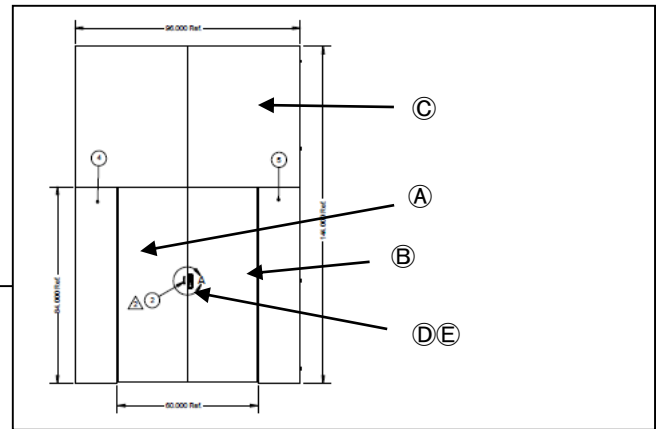
A) Left Hinged Door Panel



B) Right Hinged Door Panel



C) Double Door Header



D) Digital Door Lock



E) Door Handle

1. Assemble door components before installing into wall

- Ensure side panel connectors are in closed position
- Lay Left Hand Hinged Door Panel **(A)** flat on floor – interior side facing up
- Lay Right Hand Hinged Door Panel **(B)** next to **(A)** – sticker side facing up
- Insert Door Header **(C)** into stacking pegs on top of hinged door panels - sticker side up
- Tighten header connectors
- Ensure side panel connectors are in closed position
- Lift door and position into wall.

2. Place leading edge in Floor Bracket next to installed panel wall

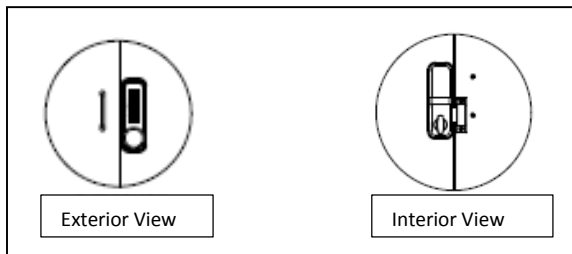
- Place floor bracket on following edge of door assembly
- Fit door to panel on leading edge of installed panel wall
- On inside, hand tighten side connectors to installed panels using Allen wrench
 - **Do Not use power tools or over-tighten**
- Adjust fit and shim at floor brackets if necessary
- Insert Upper Bracket into slots at top of panel joint and secure back to header

or

- Insert Free Standing Bracket at slots at top of panel joint and secure to floor.
- Continue inserting wall panels

3. Attach door hardware using pre-drilled holes (*illustration 1.1*) and follow instructions located with lock to set digital code.

Illustration 1.1



NUDO

Nudo Products, Inc.
1500 Taylor Avenue
Springfield, IL 62703
Phone 1.800.826.4132 * 1.217.528.5636
Fax 1.217.528.8722

Form 6012 Rev. 01 12/14
Info@nudo.com
www.nudo.com

NuBarricade

NUB-BSP2011C-05

Floor Bracket Installation Guidelines



A) Floor Bracket
Qty.5
BSP2011C

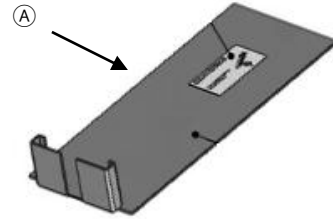


Illustration 1.1

- 1) Insert Floor Bracket (A) at every panel joint with the exception of the wall attachment to panel joint.

Illustration 1.1

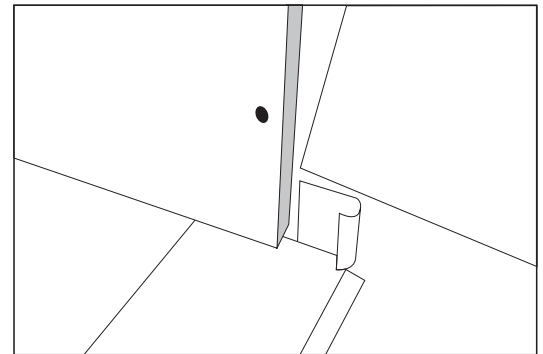
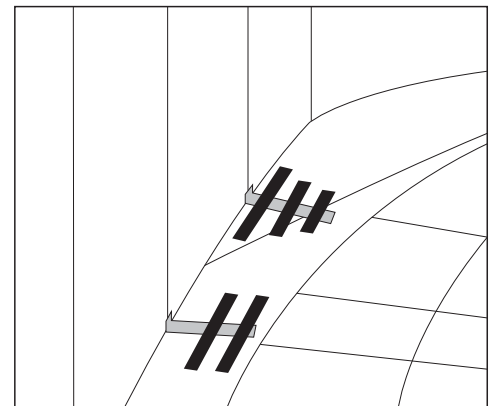


Illustration 1.2

- 2) When panels are positioned at desired location, tape Floor Brackets (A) to floor using duct tape.

Illustration 1.2



NuBarricade

NUB-BFP2833-05

Upper Bracket Assembly Guidelines

Parts:

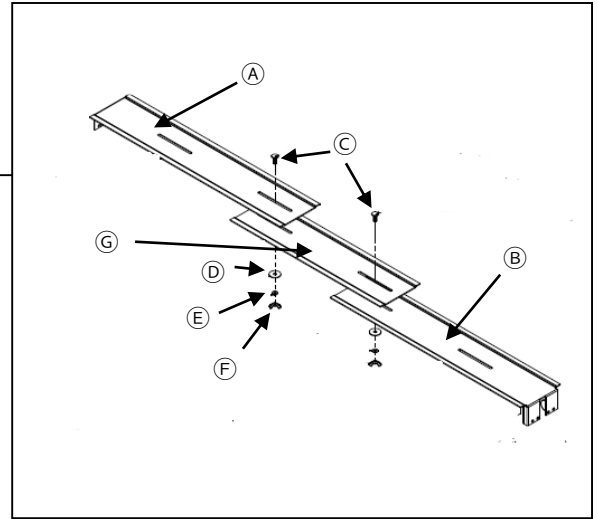
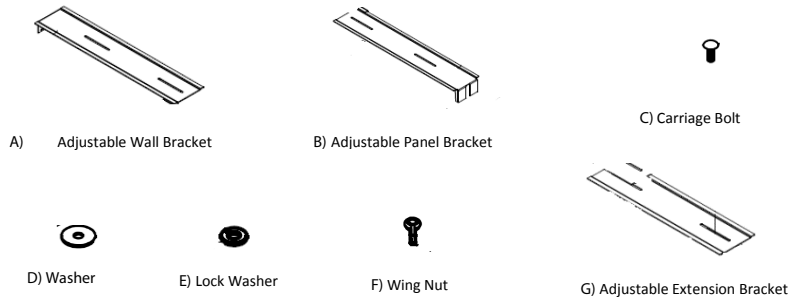


Illustration 1.1

- 1) Insert Carriage Bolt (C) through Adjustable Wall Bracket (A) and Adjustable Extension Bracket (G). Connect washer (D), lock washer (E), and wing nut (F) to Carriage Bolt.

See Illustration 1.1

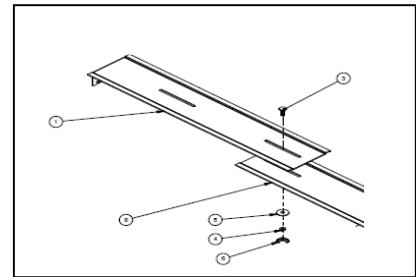


Illustration 1.2

- 2) Insert Carriage Bolt (C) through Adjustable Panel Bracket (B) and Adjustable Extension Bracket (G). Connect washer (D), lock washer (E), and wing nut (F) to Carriage Bolt.

See Illustration 1.2

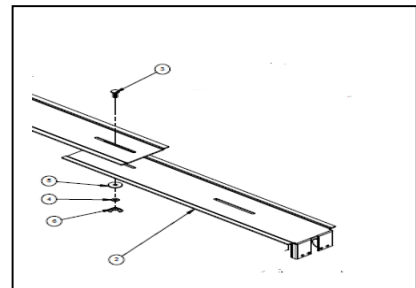
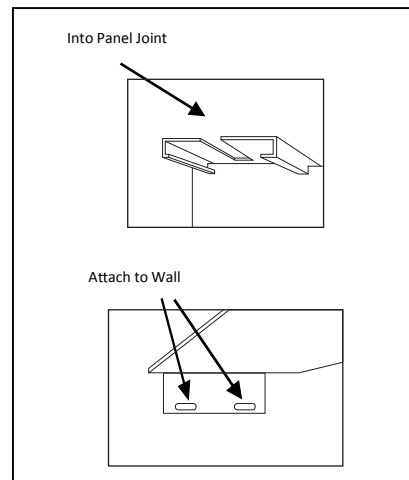


Illustration 1.3

- 3) Insert Adjustable Panel Bracket (G) into NuBarricade Panel Wall at joints and secure Adjustable Wall Bracket (A) to wall with screw. Adjust length by loosening/tightening wing nuts.

Caution: Do not install additional panels without securing the previous set using upper brackets.

See Illustration 1.3



NUDO®

Nudo Products, Inc.
1500 Taylor Avenue
Springfield, IL 62703
Phone 1.800.826.4132 * 1.217.528.5636
Fax 1.217.528.8722

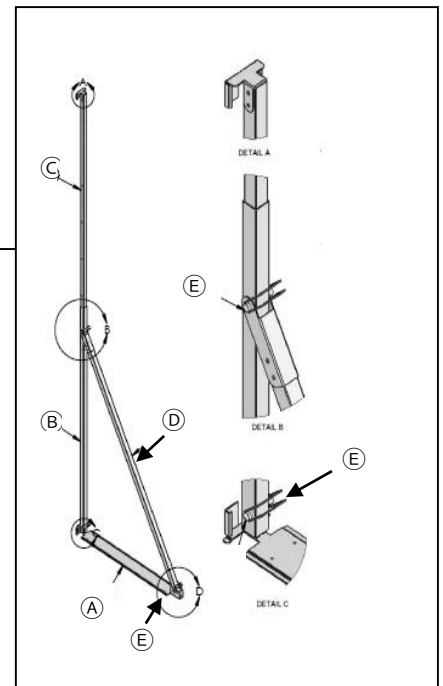
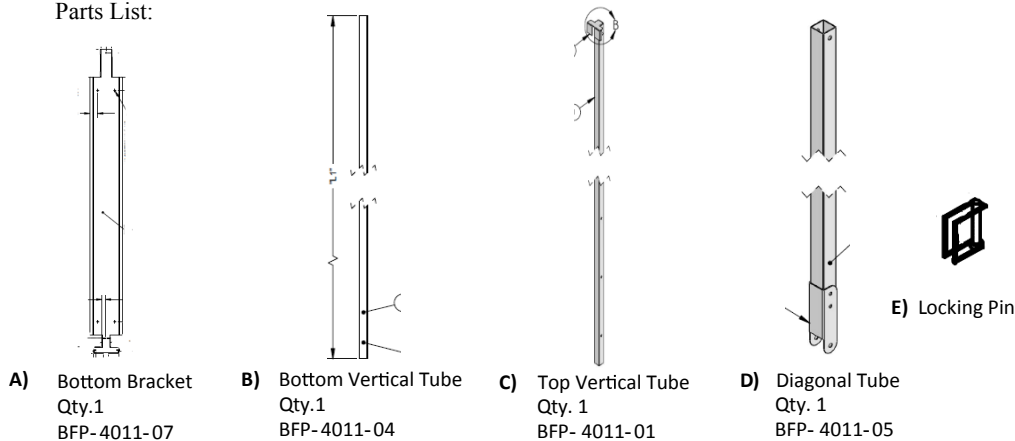
Form 6012 Rev. 01 12/14
Info@nudo.com
www.nudo.com

NuBarricade

NUB-BFP4011A-8-12 and NUB-BFP4011B-5-8

Free Standing Floor Bracket Assembly Guidelines

Parts List:



**NOTE: Free Standing Floor Brackets must be installed at every other joint.
Use with Top Panel Support Clip NUB-BSP-2222-05.**

1. Insert Bottom Vertical Tube (B) into front of Bottom Floor Bracket (A) matching pre-drilled holes and secure in place with locking clip (E). (Illustration 1.1)
2. Insert Top Vertical Tube (C) into Bottom Vertical Tube (B) with upper bracket connecting bracket facing forward. (Illustration 1.2)
3. Attach Diagonal Tube (D) to Bottom Bracket (B) using pre-drilled holes and secure in place using locking clip (E). (Illustration 1.3)
4. Slide Top vertical tube (C) up and lock it into Panels at top joint. Secure at selected pre-drilled hole using locking clip (E). Secure Bottom Bracket (A) to floor with tape.

Illustration 1.1

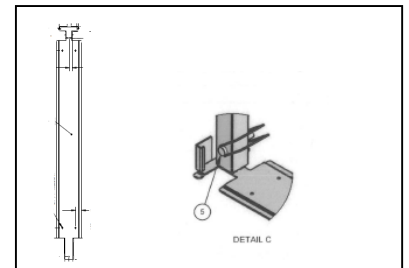


Illustration 1.2

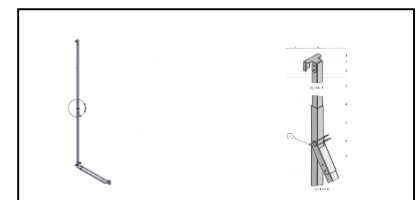


Illustration 1.3

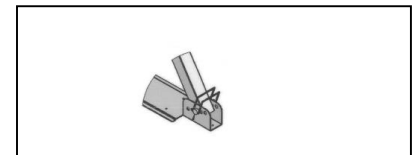
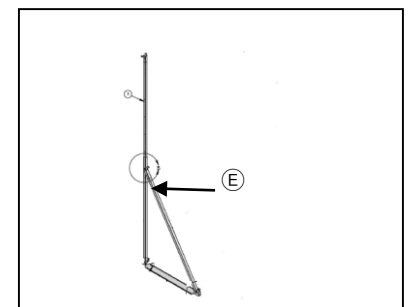


Illustration 1.4



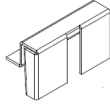
NUDO

Nudo Products, Inc.
1500 Taylor Avenue
Springfield, IL 62703
Phone 1.800.826.4132 * 1.217.528.5636
Fax 1.217.528.8722

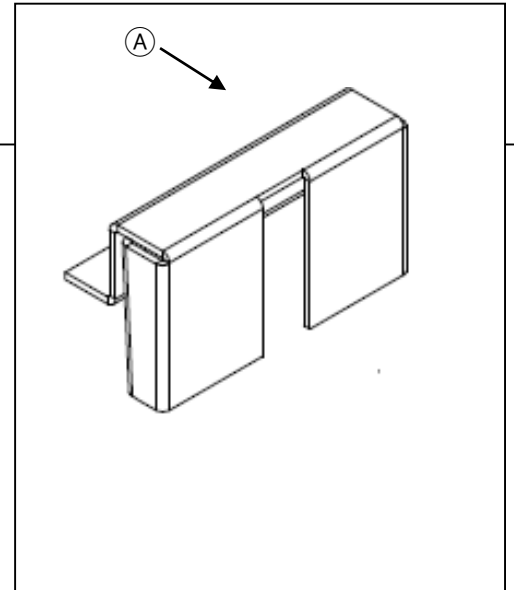
Form 6012 Rev. 01 12/14
Info@nudo.com
www.nudo.com

NuBarricade
NUB-BFP-2222-05
Top Panel Support Clip Installation Guidelines

Parts List:



- A) Upper Bracket Clip
Qty.5
BSP2222



Upper Panel Support Clips are used in conjunction with the Free Standing Floor Brackets (NUB-BFP4011A and NUB-BFP4011B)

For use with the Free Standing Floor Bracket (NUB-BFP4011A and NUB-BFP-4011B):

Free Standing Floor Brackets must be installed at every other panel joint, at alternating panel joints:

Insert Upper Panel Support Clip (A) at top panel joints and Insert Standard Floor Bracket NUB-BSP2011C at the Floor Joint.

For other use:

If ceiling height does not allow use of a Standard Upper Bracket Assembly (NUB-BFP2833)

Insert Upper Panel Support Clip (A) at top of Panel Joint to aid in holding panel joints securely in place. Resume use of the Upper Bracket Assembly at next joint.



Nudo Products, Inc.
1500 Taylor Avenue
Springfield, IL 62703
Phone 1.800.826.4132 * 1.217.528.5636
Fax 1.217.528.8722

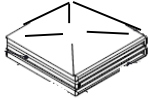
Form 6012 Rev. 01 12/14
Info@nudo.com
www.nudo.com

NuBarricade

NUB-BSP2299A and NUB-BSP2299B

Dust Barrier Installation Guide lines

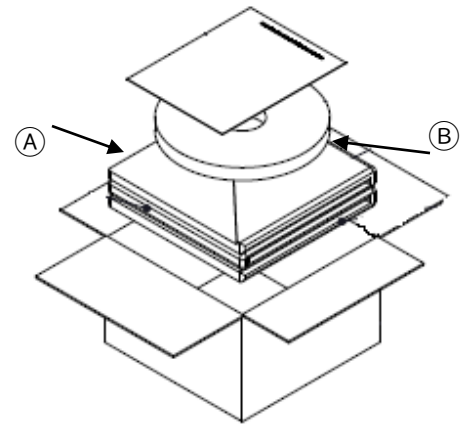
Parts List:



A) Dust Barrier Fabric Panel
Qty. 3
BSP2099A or BSP2099B



B) 1 Roll single sided Hook tape
Qty. 1
369993



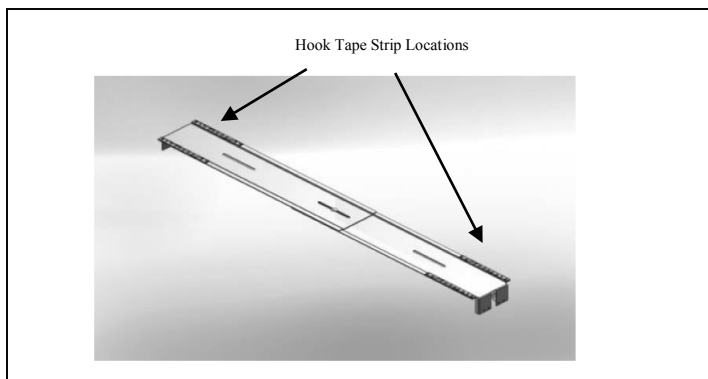
Required Tools

Scissors or Utility Knife
Tape Measure
Ladder

NOTE: Instructions assume barrier is being installed onto a standard SingleNuBarricade Panel system (36' face, and either a 3' or 5' return), and that the system has been installed prior to barrier installation. Steps 2-4 can also be completed before system installation.

1. Cut 8-2" long strips, 24-6" long strips and 2-48" long strips of hook tape (B) off of supplied roll.
2. Attach 4-6" long hook tape strips to each Upper Bracket as shown in the illustration 1.1.
3. Peel liner off of hook tape to expose pressure-sensitive adhesive on back of strip and place in appropriate position. Apply pressure to activate adhesive.
4. Attach 48" hook tape strip on the top of the inside face of each end of the NuBarricade Panel System. Hook tape strip should extend from the wall connector to the end of the corner panel adjacent to the face of the system. Peel liner off of hook tape to expose pressure-sensitive adhesive on back of strip and place about 1/2" from the top of the panels. Apply pressure to activate adhesive.

Illustration 1.1



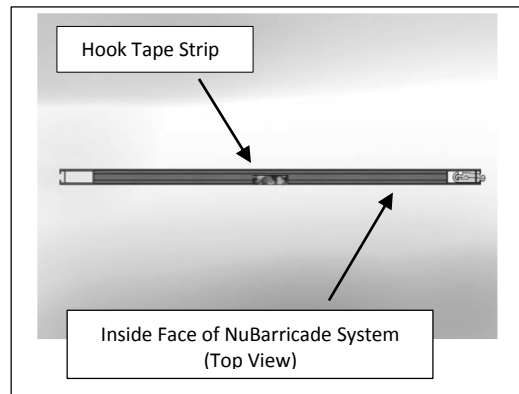
NUDO

Nudo Products, Inc.
1500 Taylor Avenue
Springfield, IL 62703
Phone 1.800.826.4132 * 1.217.528.5636
Fax 1.217.528.8722

Form 6012 Rev. 01 12/14
Info@nudo.com
www.nudo.com

5. Attach 1" long hook tape strips in the approximate center on the top edge of each of the panels which make up the front face of the NuBarricade System. Illustration 1.1

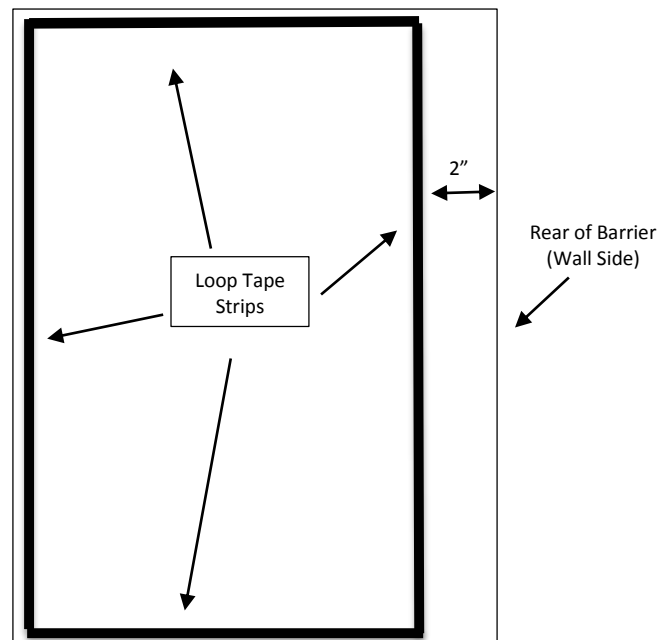
Illustration 1.1



Dust Barrier Cover Installation:

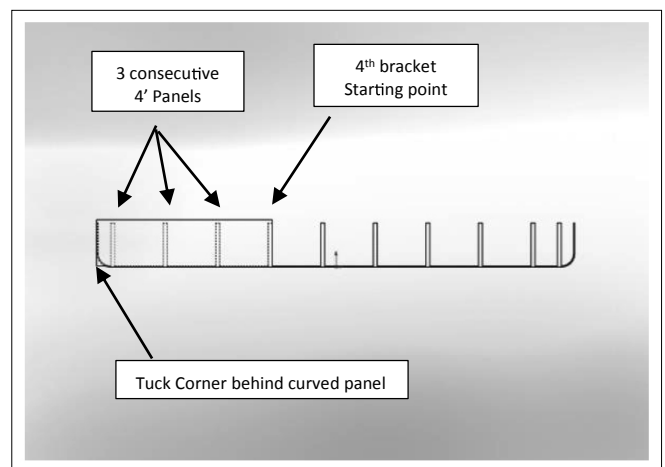
1. Orientate the Dust Barrier Cover by locating the edge of the panel where the sewn-on loop tape strip is offset from the edge by 2". This side of the panel will be installed adjacent to the permanent wall.

Illustration 1.2



2. Identify the end of the NuBarricade System which the Dust Barrier installation will begin. Locate the end of the system which has 3 consecutive 4' wide panels attached to a corner. Starting at this location will ensure that the first Dust Barrier panel will align properly with a ceiling bracket. Illustration 1.3

Illustration 1.3 - NuBarricade topview



3. Start at the 4th bracket identified in step #1:
Lay the 1st Dust Barrier panel across the ceiling brackets from the far side of the bracket to the edge of the NuBarricade System. Align the Dust Barrier with the front face of the system and secure to the hook tape on the ceiling brackets and panels. Tuck corner in behind curved corner and secure on hook tape on the inner panel face.

Note: Leave space for venting

NUDO

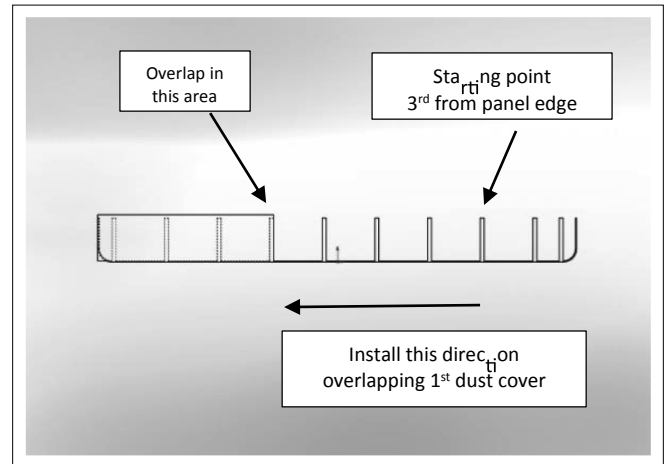
Nudo Products, Inc.
1500 Taylor Avenue
Springfield, IL 62703
Phone 1.800.826.4132 * 1.217.528.5636
Fax 1.217.528.8722

Form 6012 Rev. 01 12/14
Info@nudo.com
www.nudo.com

4. Start at the 3rd bracket from the opposite end of the NuBarricade Wall. Lay the 2nd Dust Barrier overlapping the first panel. Align the Dust Barrier with the front face of the system and secure to the hook tape on the ceiling brackets and panels.

Illustration 1.4

Illustration 1.4

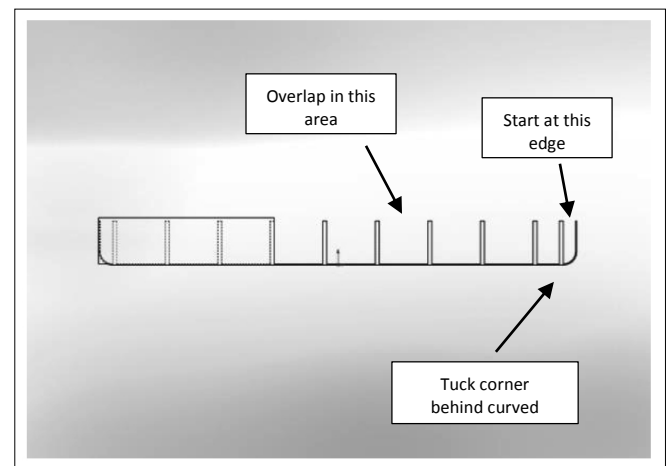


5. Start from the open end of the NuBarricade Panel System. Lay the 3rd Dust Barrier panel across the ceiling brackets. Attach the dust cover to the hook tape on the inner face of the end panel. Align the Dust Barrier with the front face of the system and secure to the hook tape on the ceiling brackets and panels. Tuck corner in behind curved corner and secure hook tape on the inner panel face.

Note: The 3rd panel will overlap the 2nd panel.

Illustration 1.5

Illustration 1.5



Note: Leave space for venting

Cleaning Instructions:

- Dust Barriers may be hand or machine washed using commercially available laundry detergents. If spot cleaning is required, a soap and water solution may be used.
- Air drying is the recommended method for drying the barrier after washing.

NUDO

Nudo Products, Inc.
1500 Taylor Avenue
Springfield, IL 62703
Phone 1.800.826.4132 * 1.217.528.5636
Fax 1.217.528.8722

Form 6012 Rev. 01 12/14
Info@nudo.com
www.nudo.com