

NUDO®

Laminated Panels With A Purpose



UTILITE™

INTERLOCKING WALL & CEILING PANELS

Utilite panels are easy to install, and the interlocking nature of the panels offers a near seamless appearance that is easy to clean. These versatile panels can be installed quickly, both vertically or horizontally, directly to studs or substrate. Utilite provides an effective option when building clean rooms at a very attractive price point.

- 100% moisture resistant
- Will not corrode
- Ideal for high water exposure areas
- Clean, smooth, bright white surface
- Meets USDA, FDA requirements
- Class A fire-rated
- Interlocking panels
- Lightweight panels
- Ease of installation
- 92% light reflectivity

POPULAR APPLICATIONS

Commercial Kitchens
Dairy Facilities
Exam Rooms
Food Preparation Areas

Laboratories
Healthcare Facilities
Service Areas
Locker Rooms

Carwash Facilities
Veterinary Clinics
Pharmaceutical Plants
Clean Rooms

Restrooms
Marine Facilities
Food Processing Plants
Basements

PHYSICAL CHARACTERISTICS & PROPERTIES

Standard Sizes

16" x 8' 24" x 8'
 16" x 10' 24" x 10'
 16" x 12' 24" x 12'
 16" x 16' 24" x 16'
 16" x 20' 24" x 20'

Drop-In Ceiling Sizes

4' x 4' 2' x 4'
 0.350" Nominal Thickness

Fire-Rating: Class A

Nominal Thickness: 0.40"

Certifications

Meets LA County Requirements for walls and ceilings
 Meets USDA Requirements for walls and ceilings
 Meets FDA Requirements for walls and ceilings
 CFIA - ULCS 102.2 - Class A

Warranty

UtiLite interlocking liner panels are covered under a limited warranty for a period of two (2) years from date of original purchase.

Physical Properties

Typical Value	Unit	Test	Method Property
Surface Burn Test	Class A	NFPA / IBC	ASTM E84
Flexural Strength	2,233	lbf / in ²	ASTM C393
Flexural Modulus	156,976	psi	ASTM C393
Flexural Load	10,496	psi	ASTM D3043
Tensile Strength	1,308	psi	ASTM D638
Izod Impact	1.57	ft-lbs / in	ASTM D256

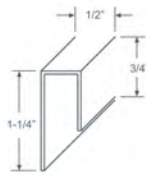
V-9-Division Bar

V-15-Outside Corner

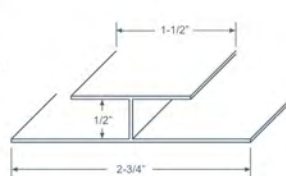
V-19-Edge Cap

V-21-Inside Corner

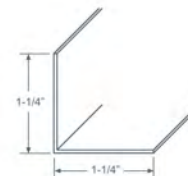
CS-125-Counter Sinking Screw



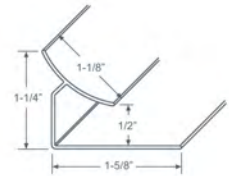
Edge Cap



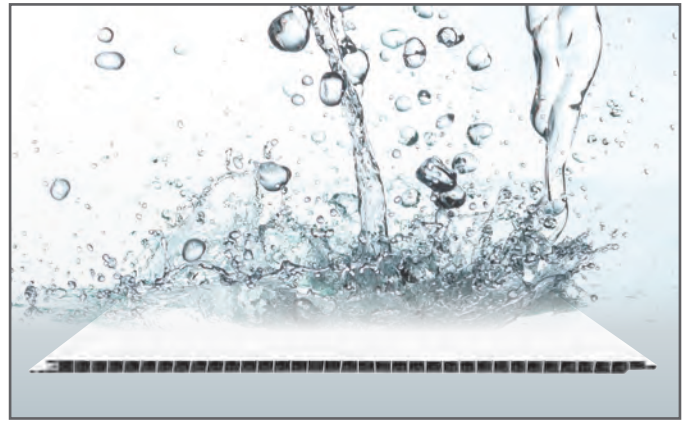
Division Bar



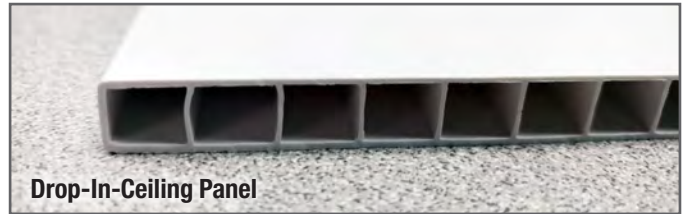
Outside Corner



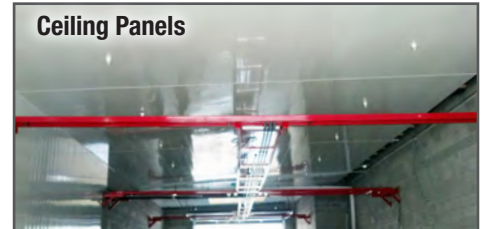
Inside Corner



Interlocking Panels



Drop-In-Ceiling Panel



Ceiling Panels

NUDO[®]

A VERZATEC COMPANY

1500 Taylor Avenue Ph: 800.826.4132
 Springfield, IL 62703 Fax: 217.528.8722
 www.Nudo.com

Form 1002.L.Rev4.2018

**Visit www.Nudo.com or
 contact our local dealer for details.**