

WITHIN THE PANELS

From the Desk of Darryl Rosser



Two major league baseball teams that are competing deep in the playoffs are fan favorites of many team members at our factory locations. (Sorry Cards and Pirate fans!) The Chicago Cubs and the Cleveland Indians both had stellar seasons, yet their performance in October will define their legacy.



At Nudo/Marlite, October can also be a defining month. Much activity is underway in strategic planning, budget preparation, facility preparation for new equipment, new product development, new market development, and most importantly looking for those key orders that will help make our month and year. Thanks to the Verzatec team for traveling to Dover to assist the team in the 2016 business review and 2017 strategic planning process.

Darryl Rosser

Passing the Baton!

Darryl and Alfredo are working closely together in transitioning responsibilities. While Darryl is focusing on execution on 2016 initiatives, Alfredo is focusing on achieving strategic growth and in establishing plans that will improve operational performance in 2017. Timing could not have been better to execute the transition. Alfredo's presence allowed Darryl to take some time for critical personal requirements, while Darryl's continuance allows Alfredo to close out some of his former projects and to squeeze in some family time before beginning "full throttle".



NUDO *Cares*

One of Nudo's cultural tenants is Giving Back to the communities in which we live. In September and October Nudo team members in Springfield are collecting cans of food for the Central Illinois Foodbank.

Central Illinois Foodbank, established in 1982 by a coalition of churches, distributes over 9 million pounds of food annually to nearly 150 food pantries, soup kitchens, residential programs and after-school programs in a 21 county region. Central Illinois Foodbank is a member of Feeding America, the nation's largest domestic hunger relief organization, is a United Way certified agency, and currently operates a 56,000 square foot distribution facility located in Springfield, Illinois.



To date, Nudo employees, including a matching contribution are approaching 4,600 cans of donated food. The

campaign is continuing through the end of October. The initial goal was to collect 1,500 cans, and with the matching contribution would be 3,000. We are now 150% of goal!! The expectation now is that with the matching contribution as many as 5,000 cans may be collected. Wow!! Great job Team!! Many members of the community will have a much brighter Thanksgiving and Christmas holidays as a result of your contributions.

Welcome to Nudo!



Nudo welcomes Walter Surgis to the Accounts Payable team. Walter has three years A/P experience and has a B.S. in Mathematics. Walter and his wife Cindy have a daughter, Katie who is at the magical age of 16. Walter is an avid sports enthusiast and a Cubs fan.

Assessing the Present, Yet Planning for the Future!

In September, key members of the Verzatec management team met corporately with the NPI executive team to assess performance for 2016 and to establish the planning framework for 2017. Verzatec uses a robust planning process that involves a self-assessment of strengths and weaknesses, accomplishments in 2016, along with areas where expectations were not met (and why). Then, looking forward, the management team considered opportunities and threats to the business going forward. Additionally, the Verzatec team viewed the Marlite factory operations and viewed the status of the Digital Print line.



Jose Luis Ochoa, Jaime Broker, Fernando Aguilar, Greg Triplett, Heriberto Martinez, Chuck Pineau, Mark Jutte, Blake Ozier, Kim McBride, Derek Hostetter, Darryl Rosser, Francisco Senicero, Alfredo Ibarra

Marlite Progress-Full Steam Ahead!



Progress is being made at a rapid rate on the new Digital Print project. The scanner is in and functioning. Demolition of the area for the print line is complete.

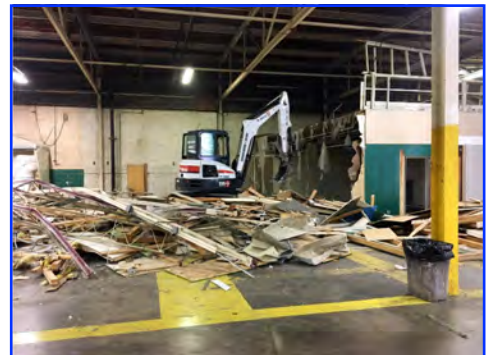
Biesse Machining Center



Nudo recently received two new CNC routers to replace the old CMS router that was more than 25 years old (it served us well!).

The CMS, while older was a larger machine and for efficiency, we replaced it with two nimbler, smaller machines—12' beds. These machines are located in a work cell alongside their larger Biesse brother—21' bed. The value of having all three machines to be Biesse is that the software is compatible with all machines, giving us greater flexibility in scheduling.

Demolition in Preparation for Digital Print



Demolition of the old R&D area, relocation of doors assembly and other manufacturing has been complete and the preparation for the digital print line will continue over the coming months.

Breast Cancer Awareness

October is



Month



DISTRIBUTION SPEEDWAY

S. MCNUTT
RACE LEADER

LAP 09

| | CAR | SCORE |
|----|-----|-------|
| 1 | 15 | 30% |
| 2 | 1 | 9% |
| 3 | 10 | 5% |
| 4 | 12 | 4% |
| 5 | 9 | 3% |
| 6 | 18 | 1% |
| 7 | 27 | -4% |
| 8 | 8 | -9% |
| 9 | 2 | -9% |
| 10 | 21 | -10% |
| 11 | 98 | -11% |
| 12 | 5 | -11% |
| 13 | 11 | -12% |
| 14 | 7 | -12% |
| 15 | 17 | -15% |
| 16 | 47 | -22% |
| 17 | 88 | -31% |
| 18 | 19 | -57% |

SPECIFICATIONS SPEEDWAY

M. FREN
RACE LEADER

LAP 09

| | CAR | SCORE |
|----|-----|-------|
| 1 | 30 | 20% |
| 2 | 75 | 15% |
| 3 | 55 | 15% |
| 4 | 89 | -8% |
| 5 | 70 | -23% |
| 6 | 28 | -28% |
| 7 | 35 | -29% |
| 8 | 25 | -30% |
| 9 | 32 | -31% |
| 10 | 39 | -31% |
| 11 | 33 | -77% |

Ey! What's the Score?



PRIME PANELS

| | JAN | FEB | MAR | APR | MAY | JUN | JUL | AUG | SEP | OCT | NOV | DEC |
|-----------|-----|-----|-----|-----|-----|-----|-----|-----|-----|-----|-----|-----|
| SAFETY | ✓ | ✓ | ✓ | ✓ | ✓ | ✓ | ✓ | ✓ | ✓ | ✓ | ✓ | ✓ |
| SALES | ✓ | ✓ | ✓ | ✓ | ✓ | ✓ | ✓ | ✓ | ✓ | ✓ | ✓ | ✓ |
| CYCLE CT. | ✓ | ✓ | ✓ | ✓ | ✓ | ✓ | ✓ | ✓ | ✓ | ✓ | ✓ | ✓ |
| WARRANTY | ✓ | ✓ | ✓ | ✓ | ✓ | ✓ | ✓ | ✓ | ✓ | ✓ | ✓ | ✓ |
| INVENTORY | ✓ | ✓ | ✓ | ✓ | ✓ | ✓ | ✓ | ✓ | ✓ | ✓ | ✓ | ✓ |



Keep up the good work!

NUDO FIELD

| | JAN | FEB | MAR | APR | MAY | JUN | JUL | AUG | SEP | OCT | NOV | DEC |
|------------|-----|-----|-----|-----|-----|-----|-----|-----|-----|-----|-----|-----|
| SAFETY | ✓ | ✓ | ✓ | ✓ | ✓ | ✓ | ✓ | ✓ | ✓ | ✓ | ✓ | ✓ |
| ON-TIME | ✓ | ✓ | ✓ | ✓ | ✓ | ✓ | ✓ | ✓ | ✓ | ✓ | ✓ | ✓ |
| QUALITY | ✓ | ✓ | ✓ | ✓ | ✓ | ✓ | ✓ | ✓ | ✓ | ✓ | ✓ | ✓ |
| INVENTORY | ✓ | ✓ | ✓ | ✓ | ✓ | ✓ | ✓ | ✓ | ✓ | ✓ | ✓ | ✓ |
| EFFICIENCY | ✓ | ✓ | ✓ | ✓ | ✓ | ✓ | ✓ | ✓ | ✓ | ✓ | ✓ | ✓ |

Marlite Field

| | JAN | FEB | MAR | APR | MAY | JUN | JUL | AUG | SEP | OCT | NOV | DEC |
|------------|-----|-----|-----|-----|-----|-----|-----|-----|-----|-----|-----|-----|
| SAFETY | ✓ | ✓ | ✓ | ✓ | ✓ | ✓ | ✓ | ✓ | ✓ | ✓ | ✓ | ✓ |
| ON-TIME | ✓ | ✓ | ✓ | ✓ | ✓ | ✓ | ✓ | ✓ | ✓ | ✓ | ✓ | ✓ |
| QUALITY | ✓ | ✓ | ✓ | ✓ | ✓ | ✓ | ✓ | ✓ | ✓ | ✓ | ✓ | ✓ |
| INVENTORY | ✓ | ✓ | ✓ | ✓ | ✓ | ✓ | ✓ | ✓ | ✓ | ✓ | ✓ | ✓ |
| EFFICIENCY | ✓ | ✓ | ✓ | ✓ | ✓ | ✓ | ✓ | ✓ | ✓ | ✓ | ✓ | ✓ |