

# **NUDO**<sup>®</sup>

A VERZATEC COMPANY



## **Endurex<sup>™</sup> 555/557**

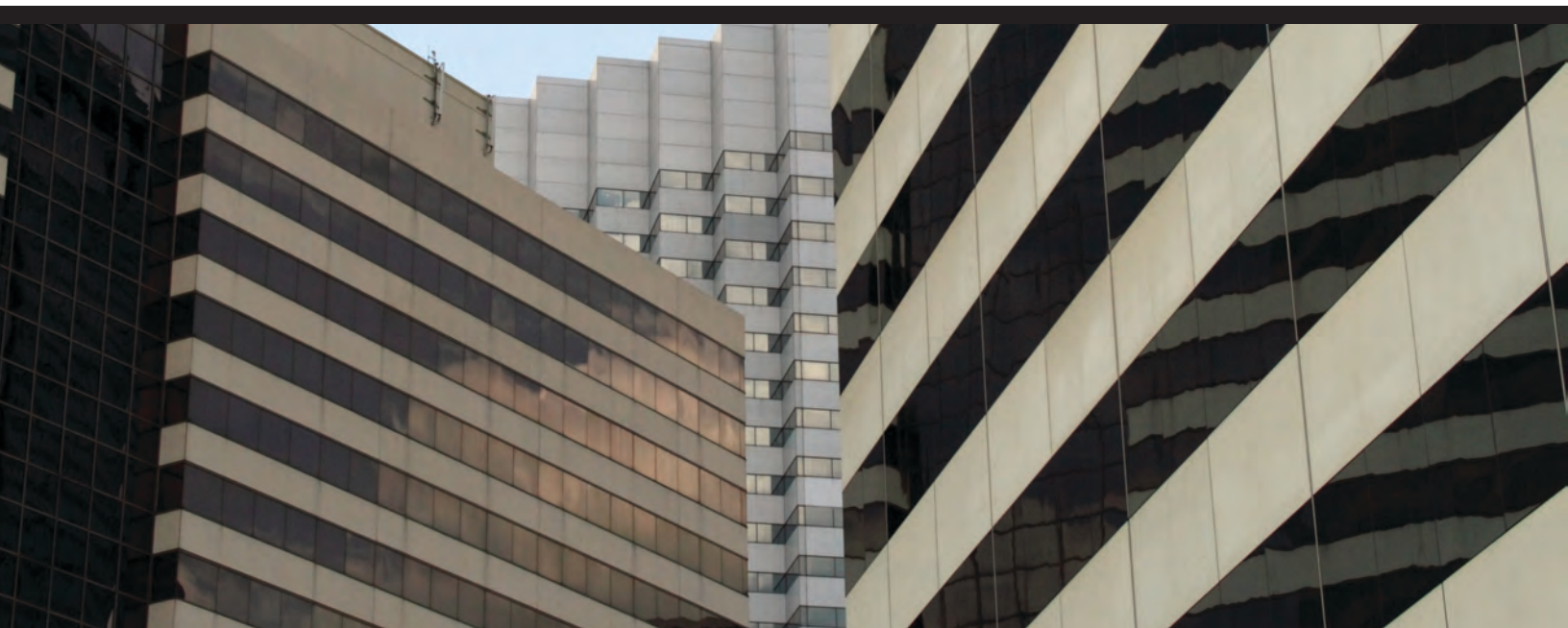
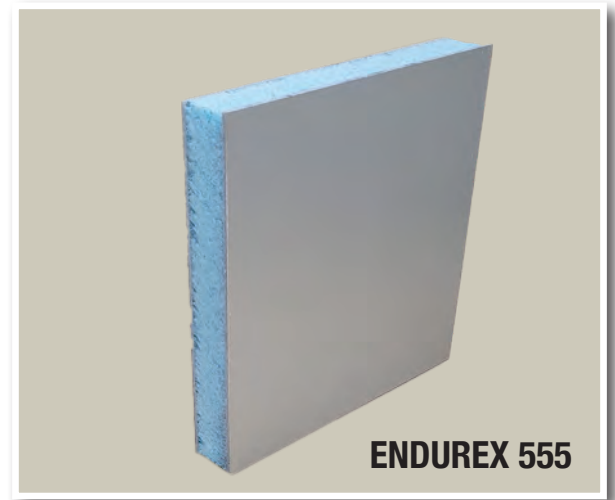
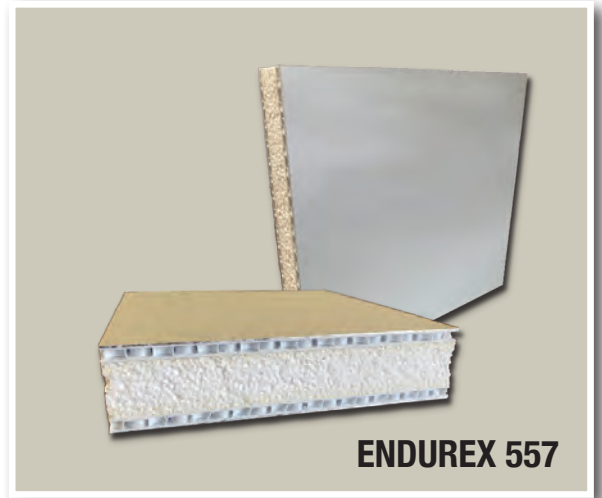
---

High Impact Hurricane Panels - Like No Other in the Industry

## HIGH IMPACT HURRICANE PANELS

NUDO's Endurex™ 555 and 557 advance the insulated "impact" or "hurricane" panel from the stone age to the space age. While other competitors rely on a heavy sheet of steel to provide the impact protection, Nudo has engineered a lightweight, super strong composite material that outperforms other products in the market.

- **A much lighter panel for easier handling**
- **Both "inside" and "outside" surfaces provide full impact resistance**
- **Because there is no steel side, panel does not require a "Front or Back" installation guideline**
- **Cuts easily on the job or in the shop - eliminates the negatives of cutting steel**
- **Advanced stabilizers are impervious to moisture**
- **Stabilizers are thinner yet stronger than steel allowing for a higher R-Value in 1" panels, making it a better overall option for this application**
- **Wet glazing not always required**





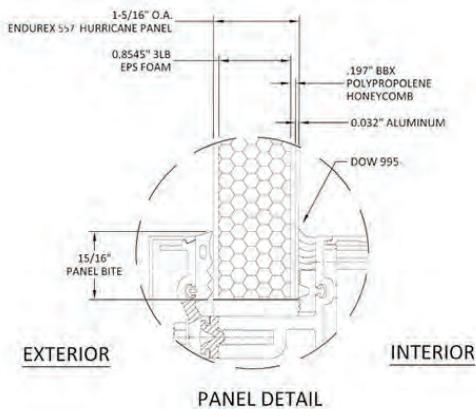


## ENDUREX 555 MEETS MIAMI DADE TESTING

Testing and certification for Miami-Dade County approvals let architects, specifiers, buyers and Authorities Having Jurisdiction (AHJs) know that products meet the unique requirements for a hurricane prone area. NUDO has worked with 3rd party testing facilities that provide the testing and certification services necessary to assure products are protected against all environmental changes.

## ENDUREX 557 PASSED HIGH VELOCITY HURRICANE ZONES TESTING

In 1992, the Florida Building Code implemented a more demanding High Velocity Hurricane Zone (HVHZ) testing to establish building materials that have gone through higher testing for extreme pressure and wind. Endurex 557 has passed this stringent testing which further re-enforces the ability of this high-impact exterior wall panel to withstand the toughest of weather conditions.



## PHYSICAL CHARACTERISTICS

### Standard Sizes: 4' x 8'

Finished panels also offered cut-to-size.

### Stabilizer Thickness: .060"

Engineered Reinforced Plastic Composite

### Foam Thickness: 0.75" + Closed Cell

### Aluminum Thickness: .032", .040", .060"

Some aluminum thicknesses may have minimum quantities and longer lead times.

### Aluminum Widths:

48" Available in all colors

# IT'S ABOUT YOU

---

At NUDO, it's more about you than us. We are customer-focused and that means you can expect the responsiveness, consistency and solutions you need.

## Responsiveness

- With over 60 years of experience, we understand the demands and expectations of the building, architecture, transportation and sign industries.
- Our goal is to make things easy for you, and that means a simple ordering process, fast turn times and our own transportation network that allows us to provide industry leading, on-time delivery on a dedicated truck.
- Our customer satisfaction score is the highest in our industry and a true testament to our understanding that you need answers quickly.



## Consistency

- With an on-time delivery rate of 99% and a return rate of less than 0.2%, we stand behind our products and stand firm on 100% customer satisfaction - period!
- We are rated as having the best service in the industry by an independent assessment.
- We know trust is earned and can never be taken for granted. From the first order and every subsequent one after that, you can depend on us to deliver the right product at the right price at the right time.

## Solutions

- We know that one size doesn't fit all. We address the variables that are inevitably present in any project and use our knowledge to provide you with product options that best suit your needs.
- Couple our wide variety of inner layer options, surface materials, substrates, thicknesses, sizes and colors with our specialized manufacturing equipment and extensive stocking level of raw materials and we can provide custom solutions for just about any panel need.

**NUDO**<sup>®</sup>  
A VERZATEC COMPANY

1500 Taylor Avenue  
Springfield, IL 62703  
www.Nudo.com

Ph: 800.826.4132  
Fax: 217.528.8722

Visit [www.Nudo.com](http://www.Nudo.com) or  
contact our local dealer for details.